



AUCTION: Thursday, February 7th, 2019 at 10:00am PST

LOCATIONS: (Site #1) - 15342 Valencia Ave., Fontana, CA 92335
(Site #2) - 6361 Box Springs Blvd., Riverside, CA 92507

PREVIEW: Monday thru Wednesday, February 4th thru 6th,
from 9:00am to 4:00pm Each Day or By Appointment,
Please Call (818) 508-7034 for More Information

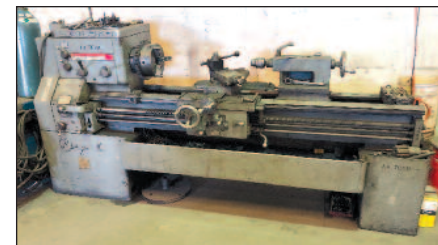
Surplus to the Ongoing Operations of:
**APPLIED SYSTEMS & YARDNEY
WATER MANAGEMENT SYSTEMS**



(2) Strong Acid Cation (SAC) Softener Units



4' x 8' Plasma Cutting Table



LeBlond Regal Lathe

METAL FABRICATION EQUIPMENT

PRIMARY SHREDDING SYSTEM

- (2) **STRONG ACID CATION (SAC) SOFTENER UNITS**, 120" Dia. Softener Vessel, 84" Dia. Polisher Softener Vessel, (Go to: www.biditup.com for more information)

ROLLING STOCK

- **HYSTER 30,000 LB. CAP. DIESEL FORKLIFT**, Mdl. H300A
- **ALLIS CHALMERS 7,300 LB. CAP. PROP. FORKLIFT**, Mdl. ACP80-2PS
- **1988 FORD F700 DIESEL STAKE BED TRUCK**
- **2001 FORD F-150 XL PICKUP TRUCK**

PLASMA CUTTING TABLE

- **4' x 8' PLASMA CUTTING TABLE**, Hansun Portable NC Cutting Machine, Hypertherm Powermax 1000 G3 Series Plasma Cutter

LATHE

- **LEBLOND REGAL 20" x 42" LATHE**, 1-3/4" Spindle Bore, 38 to 1500 RPM, 10" 3-Jaw Chuck

WELDING MANIPULATORS

- **ARONSON WELDING MANIPULATOR**, 400 Lb. Cap., 85" Reach, 72" Vert. Travel, Mdl. G6VRA6ML
- **ARONSON WELDING MANIPULATOR**, 300 Lb. Cap., 86" Reach, 96" Vert. Travel, Mdl. G6VRA8CLPK

WELDING POSITIONER

- **RANSOME 2,500 LB. CAP. WELDING POSITIONER**, Mdl. 25P-A

WELDERS

- **MILLER CP-300 WELDER**, w/R-115 Wire Feeder
- **MILLER MC-300VS WELDER**, w/S-22A Wire Feeder

SEAM WELDER

- **JETLINE 96" SEAM WELDER**, Mdl. LWS 96

RADIAL ARM DRILL

- **YOSHIDA 4' x 12" RADIAL ARM DRILL**, Mdl. YR5-115

OTHER EQUIPMENT AVAILABLE

- **EVERETT INDUSTRIES 14"/16" STRAIGHT CHOP & CUTOFF SAW**
- **BALDOR 8" PEDESTAL GRINDER**
- **BURR KING 1" BELT GRINDER**, Mdl. 562
- **ROPER WHITNEY 51" x 18 GA MAGNABEND**, Mdl. MBB-4181
- **UNIVERSAL ABRASIVE BLAST MACHINE**
- **20" DISC SANDER**
- **LADDERS**
- **AIR FLOW SYSTEMS DUST COLLECTOR**, w/E-Z Arm
- **PLATE ROLL**
- **PALLET RACKING**
- **(3) BRIDGE CRANES**, (Bridges Only - No Hoists)
- **LITHONIA LIGHTING**, (New in Boxes)
- **CINCINNATI NO. 2MH MILLING MACHINE**
- **LARGE QTY. OF OFFICE FURNITURE & FIXTURES & MORE!**



INDUSTRIAL ASSETS

REAL ESTATE • FINANCE • MACHINERY • AUCTIONS
industrialassets.com

ONLINE ONLY LIVE WEBCAST AUCTION

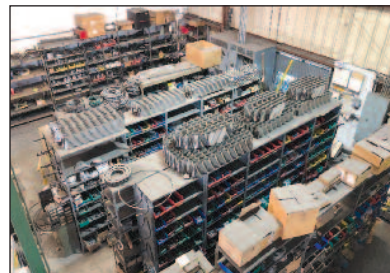
NO ONSITE BIDDING

AUCTION: Thursday, February 7th, 2019 at 10:00am PST

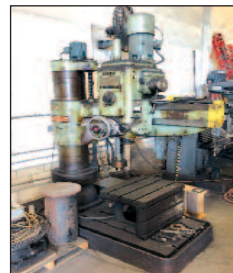
LOCATIONS: (Site #1) - 15342 Valencia Avenue, Fontana, CA
(Site #2) - 6361 Box Springs Boulevard, Riverside, CA

PREVIEW: Monday thru Wednesday, February 4th thru 6th,
from 9:00am to 4:00pm Each Day or By Appointment,
Please Call (818) 508-7034 for More Information

Surplus to the Ongoing Operations of:
**APPLIED SYSTEMS & YARDNEY
WATER MANAGEMENT SYSTEMS**



View of Parts Area



Yoshida Radial Arm Drill



Welding Manipulator

METAL FABRICATION EQUIPMENT



Jetline 96in Seam Welder, Mdl. LWS 96



Ransome 2,500 Lb. Welding Positioner



Ford F700 Stake Bed Truck



Hyster 30,000 Lb. Cap. Forklift



Allis Chalmers 7,300 Lb. Cap. Forklift



Ford F-150 XL Pickup Truck



BIDITUP™

BIDITUP AUCTIONS WORLDWIDE
AN INDUSTRIAL ASSETS COMPANY

2301 Belgrave Avenue
Huntington Park, CA 90255
Phone: 818.508.7034
Fax: 818.508.3025
info@biditup.com

Steven Mattes, Auctioneer
CA Bond #0491804



SCAN QR CODE
TO SEE ALL INFORMATION
ABOUT THIS AUCTION!