

Hilco Industrial, LLC



WEBCAST / ONSITE AUCTION

Specific assets available in the continuing operations of



Unprecedented Offering of a Complete Paper Manufacturing Facility Along With Power Generation Equipment



Wednesday & Thursday, April 18th – 19th
Beginning at 10am Local Time Each Day
Hamilton, OHIO

Sale held in conjunction with our partners:

Maynards
AUCTIONEERS • LIQUIDATORS • APPRAISERS

Ph 248.569.9781 • Fx 248.569.9793

www.maynards.com



Ph 513.738.3311 • Fx 513.738.0221

www.myronbowling.com

Hilco Industrial, LLC

Auctioneers • Liquidators • Appraisers

31555 West Fourteen Mile Road, Suite 207
Farmington Hills, Michigan 48334

Ph 877.37.HILCO (44526) • Fx 248.254.9995

www.hilcoind.com

HILCO INDUSTRIAL, LLC WEBCAST / ONSITE AUCTION

Specific assets available in the continuing operations of



AUCTION DATE

WEDNESDAY & THURSDAY,
APRIL 18TH-19TH
BEGINNING AT 10AM EACH DAY

PREVIEW

TUESDAY, APRIL 17TH
9AM – 4PM OR EARLIER BY APPOINTMENT

TO SCHEDULE A PREVIEW APPOINTMENT, PLEASE CONTACT
MARK REYNOLDS AT 205.595.5999 OR EMAIL
MREYNOLDS@HILCOIND.COM

AUCTION & PREVIEW LOCATION

601 NORTH B STREET
HAMILTON, OH 45013

DIRECTIONS

FROM CINCINNATI/NORTHERN KENTUCKY INTERNATIONAL AIRPORT (38.5 MI, 53 MINS): EXIT AIRPORT AND TAKE I-275 E TO EXIT 84 AND MERGE ONTO I-71 N / I-75 N TOWARD CINCINNATI. TAKE EXIT 4 TO MERGE ONTO I-74 W / US-27 N / US-52 W TOWARD INDIANAPOLIS. TAKE EXIT 18 AND MERGE ONTO US-27 N / BEEKMAN ST. TURN LEFT ON COLERAIN AVE, CONTINUE TO FOLLOW US-27 N. TAKE OH-126 W / OH-128 EXIT AND TURN RIGHT ON OH-128 N. THIS BECOMES SOUTH B STREET. DESTINATION WILL BE ON THE RIGHT.

FURTHER INFORMATION

- A 15% BUYER'S PREMIUM WILL BE CHARGED ON ALL ONSITE SALES. AN 18% BUYER'S PREMIUM WILL BE CHARGED ON ALL BIDSPOTTER SALES. AUCTION WILL BE CONDUCTED IN ENGLISH, ACCEPTING U.S. CURRENCY ONLY.
- REMOVAL DEADLINE WILL BE POSTED ON OUR WEBSITE, WITH HOURS OF REMOVAL BETWEEN 8AM TO 4PM MONDAY THRU FRIDAY. AFTER THE NOTED DEADLINE AT 4PM THE BUYER WILL INCUR A COST OF \$500 FOR ENTRY INTO THE FACILITY.
- FOR FURTHER INFORMATION ON MACHINERY & EQUIPMENT, PLEASE CONTACT MARK REYNOLDS AT 205.595.5999 OR EMAIL MREYNOLDS@HILCOIND.COM
- FOR PAYMENTS PLEASE CONTACT LESIA JOSEPH AT 616.732.1800 X19 OR EMAIL LJJOSEPH@HILCOIND.COM OR HILCO ACCOUNTS RECEIVABLE AT HIN_AR@HILCOIND.COM
- FOR CUSTOMER SERVICE, PLEASE CONTACT SANDI NEELY AT 248.254.9999 X16 OR EMAIL SNEELY@HILCOIND.COM

COGENERATION ELECTRICAL POWER GENERATION & DISTRIBUTION EQUIPMENT – NEW 2009



1 – HYUNDAI IDEAL 9.3 MW 175 PSI STEAM TURBINE GENERATOR SYSTEM, S/N 071059-01 (2009), # 7 – SOUTH, INCLUDING:

- Dresser Rand Large Condensing Turbine, Item No. MVR, Model / Size RD6MO-MV (6-Stage), Rated 9341 KW, 4518 Rated RPM, 4744 Max. Cont. RPM, 1st Critical – 2800 RPM (N) 2804 RPM (S), 175 PSIG – 515 F Inlet x 4" HgA Exhaust, 4-5/8" Valve Travel
- Hyundai Ideal Brushless AC Generator, Frame 21520-41, Type SAB, 9341 KW, 11676 KVA, 12470 Volts, 1800 RPM, 541 Amps, 3 Phase, 6 Wire, 60 Hertz, Pressure Lubricated Bearings, 15-20 PSI
- Lufkin Gearbox, Model N2400C, Ratio 2.510:1, Input RPM 4518, Service Factor 1.71, Catalog Rating 21526 HP
- Brushless Exciter, Frame BE-13-3, Type FRBA, KW Output 25, DC Volts 180, DC Amps 139
- Permanent Magnet Alternator, Frame PM-13-3, KVA 24, KW 22
- Air To Water Heat Exchanger, Water Flow Rate Thru Cooler 300 GPM, Max. Water Temperature Into Cooler 86 F, Max. Water Pressure 100 PSI, Water Temperature Out Of Cooler 92 F, Pressure Drop Thru Cooler 8 PSI
- Graham 10" x 8' Inter / After Condenser, MAWP FV & 20 PSIG Shell / 75 PSIG Tubes, Test Pressure 26 PSIG Shell / 113 PSIG Tubes, Design Temp. 350-Deg. F Shell / 150-Deg. F Tubes
- Graham Surface Condenser, 7322 Square Feet Surface Area, MAWP Shell – FV & 15 PSIG @ 250-Deg. F, MAWP Tubes – 75 PSIG @ 150-Deg. F, Test Pressure Shell 20 PSIG, Test Pressure Tubes 113 PSIG
- (2) Main Condensate Pumps, TECO-Westinghouse 20-HP, Goulds Model 3196 2x3-13, 12.375" Impellor Diameter, 300 GPM @ 140 TDH, 316SS Construction, #'s CP-8A & CP-8B
- Lube-Power Inc. Lube Oil Skid
- Turbine / Generator Instrument & Relay Cubicle Control Panel
- Breaker Cubicle



2 To schedule an auction, please call Hilco Industrial, LLC at 1-877-37-HILCO (44526)

COGENERATION ELECTRICAL POWER GENERATION & DISTRIBUTION EQUIPMENT – NEW 2009, *cont.*



1 – HYUNDAI IDEAL 9.3 MW 175 PSI STEAM TURBINE GENERATOR SYSTEM, S/N 071059-02, (2009), # 8 – NORTH, INCLUDING:

- Dresser Rand Large Condensing Turbine, Item No. MVR, Model / Size RD6MO-MV (6-Stage), Rated 9341 KW, 4518 Rated RPM, 4744 Max. Cont. RPM, 1st Critical – 2800 RPM (N) 2804 RPM (S), 175 PSIG – 515 F Inlet x 4" HgA Exhaust, 4-5/8" Valve Travel
- Hyundai Ideal Brushless AC Generator, Frame 21520-41, Type SAB, 9341 KW, 11676 KVA, 12470 Volts, 1800 RPM, 541 Amps, 3 Phase, 6 Wire, 60 Hertz, Pressure Lubricated Bearings, 15-20 PSI
- Lufkin Gearbox, Model N2400C, Ratio 2.510:1, Input RPM 4518, Service Factor 1.71, Catalog Rating 21526 HP
- Brushless Exciter, Frame BE-13-3, Type FRBA, KW Output 25, DC Volts 180, DC Amps 139
- Permanent Magnet Alternator, Frame PM-13-3, KVA 24, KW 22
- Air To Water Heat Exchanger, Water Flow Rate Thru Cooler 300 GPM, Max. Water Temperature Into Cooler 86 F, Max. Water Pressure 100 PSI, Water Temperature Out Of Cooler 92 F, Pressure Drop Thru Cooler 8 PSI
- Graham 10" x 8' Inter / After Condenser, MAWP FV & 20 PSIG Shell / 75 PSIG Tubes, Test Pressure 26 PSIG Shell / 113 PSIG Tubes, Design Temp. 350 F Shell / 150 F Tubes
- Graham Surface Condenser, 7322 Square Feet Surface Area, MAWP Shell – FV & 15 PSIG @ 250 F, MAWP Tubes – 75 PSIG @ 150 F, Test Pressure Shell 20 PSIG, Test Pressure Tubes 113 PSIG
- (2) Main Condensate Pumps, TECO-Westinghouse 20-HP, Goulds Model 3196 2x3-13, 12.375" Impellor Diameter, 300 GPM @ 140 TDH, 316SS Construction, #'s CP-8A & CP-8B
- Lube-Power Inc. Lube Oil Skid
- Turbine / Generator Instrument & Relay Cubicle Control Panel
- Breaker Cubicle



COGENERATION ELECTRICAL POWER GENERATION & DISTRIBUTION EQUIPMENT – NEW 2009, cont.

- 1 – SHIPPENSBURG CONDENSATE RECEIVER SKID
- 1 – WATER COOLING TOWER, With (4) Goulds Model VIT-FFFM Vertical Shaft Pumps, Size 24EHC, 1-Stage, Full Impellor, 5625-GPM @ 85' TDH, CCW Rotation, 150-HP, (2) 2-Speed Fan Motors, 200-HP 1785 RPM / 50-HP 895 RPM
- 1 – TECO-WESTINGHOUSE / TURBO STEAM 1.5 MW 18 PSIG BACKPRESSURE STEAM TURBINE – GENERATOR, (New 2009), No. 1, Including:
 - Turbo-Steam Model BP-D-I-P Steam Generator, S/N 8198, Rated Power 1522 KW, Rated Inlet 175 PSIG, Rated Flow 76,725-Lbs./Hr, Rated Outlet 18 PSIG
 - TECO-Westinghouse Generator, S/N 9693BA-01, 1623 KW – 2400V, Frame 4512, Encl. WP2, 3622 RPM – 0.9 PF – 424 FLA – 3 PH – 60 Hz
- 1 – TECO-WESTINGHOUSE / TURBO STEAM 1.1 MW 50 PSIG BACKPRESSURE STEAM TURBINE – GENERATOR, (New 2009), No. 2, Including:
 - Turbo-Steam Model BP-D-I-P Steam Generator, S/N 8199, Rated Power 1096 KW, Rated Inlet 175 PSIG, Rated Flow 76,734-Lbs./Hr, Rated Outlet 50 PSIG
 - TECO-Westinghouse Generator, S/N 96933AA-01, 1173 KW – 2400V, Frame 4011, Encl. WP2, 3625 RPM – 0.9 PF – 305 FLA – 3 PH – 60 Hz



ELECTRICAL DISTRIBUTION

- 1 – EATON CUTLER-HAMMER MODEL POW-R-LINE C SWITCHBOARD, 3-Section, Volts 480Y/277V, Amperes 3000, 3 PH, 60 Hz, 4 Wire, Magnum DS 3000 Amp Low Voltage AC Power Circuit Breaker
- 1 – EATON CUTLER-HAMMER MODEL CAT. NO. 00001A15FIBS TRANSFORMER, S/N 0859002631 (2008), 2000-2240 / 2300-2576 KVA, H.V.- 12470, L.V.- 480Y/277, 60 Hz
- 1 – EATON CUTLER-HAMMER MODEL MVS METAL ENCLOSEDLOAD INTERRUPTER SWITCHGEAR
- 2 – EATON CUTLER-HAMMER MODEL FREEDOM SERIES 2100 MOTOR CONTROL CENTERS, #'s MCC-1 & MCC-2, 600 Volts, 1200 Amps
- 1 – TRANE MODEL SCWH10043A01010 AIR CONDITIONING UNIT, S/N B1008S0042 (2008), Cooling Capacity 117000 BTUH
- 1 – EATON CUTLER-HAMMER MODEL V48M28T75EE DRY TYPE DISTRIBUTION TRANSFORMER, S/N J08J00593, 75 KVA Type DT-3, Three Phase, Primary Voltage 480 Delta, Secondary Voltage 280Y/126

CONTROLS & DISTRIBUTION: Operational Control Consoles, Distribution Switchgear, Transformers, Sub-Stations, Disconnects, Breakers, etc

COGENERATION ELECTRICAL POWER GENERATION & DISTRIBUTION EQUIPMENT – NEW 2009, *cont.*

EXISTING POWERHOUSE UTILITY EQUIPMENT

- 1 – **GENERAL ELECTRIC NUMBER 6 STEAM TURBINE GENERATOR, With:**
 - General Electric Steam Turbine, S/N 38559, 8-Stage, KW Rating 7500, Inlet Steam Pressure 600 PSIG, Exhaust Steam Pressure 165-185 PSIG, 3600 RPM
 - General Electric Type ATB 2 Alternating Current Generator, S/N 4824293, 9375 KVA, 3600 Form HL, Volts – 2300 Delta / 4000 Y, Amps – 2356 Delta / 1358 Y, 60 Hz, 3600 RPM, 7500 KW, 80% P.F., 268 Field Amps
(* No. 6 Generator Note: Upgraded To 10,500 KW – Calculated ~3300 A @ 2300 V, ~13000 KVA)
- 1 – **GENERAL ELECTRIC NUMBER 5 STEAM TURBINE GENERATOR, With:**
 - General Electric Steam Turbine, S/N 38560, 6-Stage, B.P. Controlled, Non-Condensing, KW Rating 7500, Inlet Steam Pressure 165 -185 (200) PSIG, Exhaust Steam Pressure 18 PSIG, 3600 RPM
 - General Electric Type ATB 2 Alternating Current Generator, S/N 4824298, 9375 KVA, 3600 Form HL, Volts – 2300 Delta / 4000 Y, Amps – 2356 Delta / 1358 Y, 60 Hz, 3600 RPM, 7500 KW, 80% P.F., 268 Field Amps
- 1 – **GENERAL ELECTRIC NUMBER 3 STEAM TURBINE GENERATOR, With:**
 - General Electric Curtis Steam Turbine, S/N 28561, 13-Stage, Condensing, Inlet Steam Pressure 165-185 PSIG, Exhaust Steam Pressure Condensing ~28" Hg, 6000 KW, 3600 RPM, Form EE
 - General Electric Type ATB 2 Alternating Current Generator, S/N 3868966, 7500 KVA, 3600 Form T, 1883 Amps, 2300 Volts, 3600 RPM, 6000 KW, 80% P.F., 60 Hz, 240 Field Amps
- 1 – **GENERAL ELECTRIC NUMBER 4 STEAM TURBINE GENERATOR, Nameplate Data NA, (Unit Not In Service)**



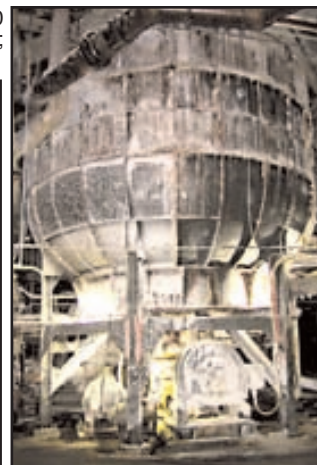
A COMPLETE PAPER MANUFACTURING FACILITY CURRENTLY UNDER POWER

STOCK PREP

- 3 – INGERSOLL RAND RIVER WATER INTAKE PUMPS, 150-HP, 750-GPM
- 1 – MUELLER FILTER SUPPLY PUMP, 60-HP, Vertical Shaft, 12"
- 2 – GOULDS CENTRIFUGAL FILTER SUPPLY PUMPS, 125-HP, 14" x 12"
- 8 – ILLINOIS WATER TREATMENT MIXED HEAD FILTERS, Epoxy Lined Carbon Steel Vessels, 1200-GPM, 75 PSI @ 400 Deg. F
- 1 – FILTER SYSTEM BACKWASH PUMP, 75-HP, 10" x 14"
- 1 – MUELLER 100 PSI MILL SUPPLY PUMP, 150-HP, Vertical Shaft, 10"
- 3 – INGERSOLL RAND 100 PSI HIGH PRESSURE MILL SUPPLY CENTRIFUGAL WATER PUMPS, 200-HP, 10", 2,200-GPM
- 4 – GOULDS 35 PSI LOW PRESSURE MILL SUPPLY CENTRIFUGAL WATER PUMPS, 150-HP, 14" x 12", 4,250-GPM, (*Note – (1) With New Motor, (1) Missing Motor)
- 4 – GOULDS 450-HP WATER SUPPLY PUMPS
- 2 – BLACK CLAWSON HYDRAPULPERS, Est. 16' Diameter, Est. 120-Tons/Day, 400-HP Drive Motor & Gearbox, 100-HP Centrifugal Discharge Pump, Chain-Type Virgin Bale Load Conveyor
- 1 – SIZE MIXING SYSTEM, With Stainless Steel Mix Tanks, Fractional HP Pumps, Vertical Shaft Mixers, Metering Pumps, etc
- 1 – KREBS MODEL SFC2500 HIGH DENSITY STOCK CLEANER, Power Gate Valve, (2) Rosemount Programmable Flow Meters
- 2 – FIBERPREP MODEL CH-5 PRIMARY & SECONDARY SCREENS, 125-HP, 800-RPM, Controls & Piping
- 1 – BELOIT MODEL XDW-32 DYNAMIC PRIMARY WASHER, S/N DW-115, (*Missing Drive Motor)
- 1 – BELOIT MODEL DW-32 DYNAMIC SECONDARY WASHER, S/N DW-116, 150-HP
- 3 – SPROUT WALDRON MODEL DURAFLO 26-CC1 26" DISC REFINERS, S/Ns 68-1538, 68-1540, 68-1539, 400-HP, 720 RPM, Control Console
- 1 – BELOIT MODEL 4324N SERIES DD-4000 DOUBLE DISC REFINER, S/N D-2436, 400-HP, 712-RPM
- 1 – JONES SAVEALL DISC REFINER, 8' to 9' Diameter Discs, 12' Length, Controls
- 21 – SPROUT-BAUER MODEL 623N CENTRIFUGAL STOCK CLEANERS, Primary, Secondary, Tertiary, Quaternary



Assortment Of Centrifugal Pumps Including Supply, Overflow, Stock Return, etc., 50 to 150-HP; Stock Chests & Transfer, With Pumps; Stock Prep Pumps, Tanks, Mixers; Die Mixing & Additive Systems, With Pumps, Tanks, Mixers, Metering Pumps, Etc.



PAPER MACHINE • REWINDER • PAPER TEST LAB EQUIPMENT

PAPER MACHINE

1 – **SANDY HILL # 9 FOURDRINIER PAPER MACHINE**, 200-Tons/Day Max. Capacity, 140" Max. Web Width, 126" Trim Width, 1,000 Feet/Minute

Line Components To Include:

- GE AC Line Shaft Machine Drive, (7) Gearboxes, 500-HP
- Voith Valley Single Head Box, (1990), Pressurized, 12" Pond, (2) Rectifier Rolls, Tapered Bunched Tube Header, 140" Face, (44) Profile Jacks
- 142" x 20" Diameter Press Roll
- Sandy Hill Knock Down Type Fourdrinier Section, Stainless Steel Reels, 140"W x 85' 8"L Wire, 2-1/2 Layer, (1) Tension & (1) Guide Roll, Wire Shower, (9) Showers With Sandy Hill Air Guide Control, Sandy Hill Single-Point Table Shake, SEC Forming Board With (3) Foils, (1) Hydro Foil, (5) Blades, (10) Suction Boxes
- Plank 142" Face x 30" Diameter Dandy Roll
- 144" Face x 25" Diameter Couch Roll Section, Line Shaft Driven
- Sandy Hill Suction-Type First Press, Line Shaft Driven, Needled Uhle Box Felt Conditioner, 138" Face x 24" Diameter Upper Roll, Rubber Cover, Sandy Hill Air Guide Control
- Sandy Hill Plain-Type Second Press, Line Shaft Driven, 138" Face x 24" Diameter Upper Roll, Rubber Cover, Sandy Hill Air Guide Control, Needled Uhle Box Felt Conditioner
- Sandy Hill Third Press, 138" Face x 24" Diameter Upper & Lower Rolls
- (36) Sandy Hill Horizontal Dryer Cans, 136" Face x 48" Diameter, 18/50 PSI, 220/270°F Temperature, Single Felted, 138" Width x 97'8" Length Felt With Sandy Hill Air Guide Control, Hood Ventilation, 75-HP 20,700 CFM Moisture PV Control, Rope System, Bowser Oil Lubrication System
- Patton Single Size Press, 2-Roll, 138" Width With 138" Base x 24" Diameter Top Roll, (3) Crowns, Microrock Rubber Cover, 138" Base x 24" Diameter Lower Roll, 0.018 On 70-Degree Curve Crown, Rubber Cover
- (13) Second Section Single Felted Dryer Cans, 136" Base x 48" Diameter, 18/50 PSI, 220/270 Deg. F Temperature, 138" Width x 118'7" Length Felt With Sandy Hill Air Guide Control, Hood Ventilation, 75-HP, 20,700 CFM Moisture PV Control, Rope System, Bowser Oil Lubrication System
- Hunt & Moscrop Model Breaker Stack Vertical Calender, 100-HP, 2-Roll, 134" Width Capacity, 134" Face x 18" Diameter Upper Breaker Roll, Straight Crown, Chill Metal Cover, 134" Face x 20" Diameter Lower Breaker Roll, Tripass, 150°F, Operator Control Console
- Jagenberg Model Combi-Blade GSM 63 Coater, S/N 4034029 (1990), 138" Width Capacity, Operator Control Console
- TEC Dryer, Hot Air Flow Type, 300°F, Single Pass
- ABB Model AccuRay 1180 Gauging System, (1992), With Basis Weight & Profile Controls
- (6) Third Section Horizontal Dryer Cans, 136" Face x 48" Diameter, 18/50 PSI, 220/270°F, Single Felted, 138" Width x 149'4" Length, With Sandy Hill Air Guide Control, Hood Ventilation, 75-HP, 20,700 CFM Moisture PV Control, Rope System, Bowser Oil Lubrication System
- ABB Model AccuRay 1180 Gauging System, (1992), Box Frame Type, With Single Scanner
- Jagenberg Model Combi-Blade GSM 63 Coater, S/N 4034029 (1990), 138" Width Capacity, Operator Control Console
- TEC Dryer, Hot Air Flow Type, 300°F Operating Temperature, Single Pass
- (6) Fourth Section Horizontal Dryer Cans, 136" Face x 48" Diameter, 18/50 PSI, 220/270°F, Single Felted, 138" Width x 158' Length, With Sandy Hill Air Guide Control, Hood Ventilation, 75-HP, 20,700 CFM Moisture PV Control, Rope System, Bowser Oil Lubrication System
- Vertical Calender, 2-Roll, 138" Width Capacity, 138" Face x 16" Dia. Rolls
- ABB Model AccuRay 1180 Gauging System, (1992), C-Frame Type, With Single Scanner, Controls
- Model PH652-184 Reel, 136" Face x 36" Dia. Drum, DC Line Shaft Driven
- Vacuum System, With (1) Nash Model CL-1001 Flat Box Suction Box Pump, 30-HP, (1) Hauck Model TBA-36-25 Low Vac Blower, 25-HP, (1) Nash Model CL4002 Couch Pump, 200-HP, (1) Nash Model CL3002 First Press Suction Roll Pump, 125-HP, (1) Nash Model CL2001 Uhle Box Pump, 125-HP

1 – **VALMET MODEL KL-200 REWINDER**, S/N 269, 132" Width Capacity, 5,000 Feet/Minute, 56" Roll Diameter Capacity, 10,000-Lb. Weight Capacity, With (6) Slitting Heads, Nematron PLC Control Console

1 – **SONOCO MODEL 929 CORE CUTTER**

PAPER MACHINE TEST LAB EQUIPMENT, Including Sizing Tester, Ovens, Sample Analyzer, Color & Brightness Testers, Tensile & Tear Testers, Bond & Smoothness Testers, Misc. Lab Equipment



CAST COATING MACHINES • SLITTERS • REWINDERS • SHEETING



CAST COATING MACHINES

- 5 – **135" CAST COATING MACHINES**, Special Manufactured, 135" Face Chrome Drum, Geared DC Motor Drive, Payoff, Guide Rolls, Take-ups, Operators Controls
- 3 – **135" CAST COATING MACHINES**, Special Manufactured, 135" Face Chrome Drum, Geared DC Motor Drive, Payoff, Guide Rolls, Take-ups, Finishing Coating System, Operators Controls
- 1 – **VALMET DRUM TURRET UNWIND STAND**
- 4 – **100" CAST COATING MACHINES**, Special Manufactured, 100" Face Chrome Drum, Geared DC Motor Drive, Payoff, Guide Rolls, Take-ups, Finishing Coating Rolls, Operators Controls
- 6 – **69" CAST COATING MACHINES**, Special Manufactured, 69" Face Chrome Drum, Geared DC Motor Drive, Payoff, Guide Rolls, Take-ups, Operators Controls
- 3 – **69" COLOR CAST COATING MACHINES**, Special Manufactured, 69" Face Chrome Drum, Geared DC Motor Drive, Payoff, Guide Rolls, Take-ups, Operators Controls
- 1 – **69" RESEARCH & DEVELOPMENT CAST COATING MACHINE**, Special Manufactured, 69" Face Chrome Drum, Geared DC Motor Drive, Payoff, Guide Rolls, Take-ups, Operators Controls, *Not In Service



CAST COATING MIXING

- 7 – **KINETIC DISPERSION MODEL 500 BOTTOM ENTRY KADY MILLS**, 150-HP, Working Capacity 200-600 Gallon
- 22 – **NON-JACKETED VERTICAL MIXING TANKS**, Carbon Steel & Stainless Steel, To 1,200 Gallon Capacity, Vertical Agitor Mixers
- 9 – **JACKETED STAINLESS STEEL MIXING TANKS**, To 1,200 Gallon Capacity, Vertical Agitor Mixers, Assorted Pumps

Quantity Of Mixing Area Assorted Tanks, Pumps, Mixers, Scales, Etc



SLITTERS / REWINDERS

- 1 – **WEBCO ENGINEERING MODEL TDS-MW 130" SLITTER / REWINDER**, (1997), 4,500 Feet/Minute, 60" Maximum Roll Diameter, 138" Maximum Roll Width, (2) 24" Diameter Drum Rolls, (2) 200-HP DC Motors, Slitter Stand With (7) Cutters, Fife Model CDP-01 Web Guide, Webcos Dual Back Stand, Console Control With Allen Bradley Panel Mate Power Series PLC Controls, Overhead Vacuum Scrap Removal System
- 1 – **WEBCO ENGINEERING MODEL TDS-MW 84" SLITTER / REWINDER**, (1997), 4,500 Feet/Minute, 60" Maximum Roll Diameter, 100" Maximum Roll Width, (2) 16" Diameter Drum Rolls, (2) 100-HP DC Motors, Slitter Stand With (7) Cutters, (2) Webcos Engineering Model POPE 8460 Back Stands, Console Control Station With Webcos Digital Controls, Overhead Vacuum Scrap Removal System
- 1 – **BELOIT MODEL 4000 135" SLITTER / REWINDER**, S/N 8101-35A, 4,000'/Minute, (2) 30" Diameter Drum Rolls, (2) 200-HP DC Motors, Beloit Payoff Stand, Beloit Slitter Unit With (8) Cutters, Guide/Tension Roll, Dual Beloit Take-up Stand, Console Control Stand
- 1 – **CAMERON MODEL 468-950-H2-RLT 135" SLITTER / REWINDER**, S/N P-6630, 3,000'/Minute, (2) 16" Diameter Drum Rolls, 100-HP DC Motor, Slitting Stand With (5) Cutters, Shaftless Payoff Stand With Hydraulic Width Adjustment, Web Guide, Friction Roll Guide, Shaftless Back Stand, Operator Control Station



SHEETING

- 2 – **PASABAN MODEL KDD KNIFE FOLIO SHEETERS**, (Both 1997), 984 Feet/Minute, Single Lay Boy Unit, 65" Maximum Roll Width, 78" Maximum Cut-Off Length, With 5-Position Back Stands, Each Stand With Unwind Core Handling Conveyor & Automatic Splicing, (5) Edge Guides, Slitter Unit With (4) Cutters, Pull Roll Assembly, Web Clamp Assembly, Cross-Cut Knife, Fast Tape Reject Station, Biomatik Model P388 Defect Scanner, Rotary Suction Box, Sheet Overlapping Section, Slow Belt Section, Lay Boy Stacker, Scrap Removal System, Operators Control Station & Mezzanine
- 1 – **BIELOMATIK MODEL P1085/65 SHEETER**, S/N 005, (1985), 1,000 Feet/Minute, 80" Maximum Roll Width, 63" Maximum Cut-Off, 19" Minimum Cut Length, Automatic Roll Positioner, (2) Marquip 2-Position Back Stands, 60" Diameter Rolls, Web Tension Section, Web Guide, Slitter Station With (4) Cutters, Sheet Transport Section, Cross Cutter, Reject Station, GNB Technologies Model M160060891381 Dual Lay Boy Stacker
- 1 – **LAWSON MODEL PACEMAKER II 110" PAPER CUTTER**, S/N BK143, With Avtron Back Gauge & Digital Control
- 1 – **PALLET INVERTER**, Pit Mounted, 42" x 60" Pallet Capacity, 72" Maximum Pallet Height
- 1 – **NEILSEN & HIEBERT SYSTEMS HYDRAULIC ROLL SPLITTER**, S/N 980209-1, 25" Maximum Diameter, 65" Maximum Roll Width, 15-HP Hydraulic Unit

EMBOSSERS • PACKAGING • SCRAP BALING SYSTEMS

EMBOSSERS

- 1 – **BLACK & CLAWSON MODEL 60" DUAL STAND 60" EMBOSSING MACHINE**, S/N 293 E96891, With (1) Unwind Stand, Power Width Adjustment, (1) #1 Roll Stand, 25-HP DC Motor, 22" Diameter Top Roll, 10" Diameter Bottom Roll, (1) #2 Roll Stand, 25-HP DC Motor, 10" Diameter Top Roll, 22" Diameter Bottom Roll, (1) Wind-Up Stand 5-HP DC Motor, Power Width Adjustment, (1) Operator's Control Panel, (1) GE Adjustable Speed Drive Power Panel, (1) Hydraulic Unit, (1) Drive Motor Cooling Fan With Ductwork
- 1 – **MEMCO MODEL 50 MASTER HYDRAULIC 60" EMBOSSING MACHINE**, S/N M50-61-61, 64" Overall Face Width, 15" Diameter Top & Bottom Rolls, 50-HP DC Motor, With Dusenbery Unwind & Rewind Stands, Operator's Control Panel, Allen Bradley DC Drive Motor Panel, Drive Motor Cooling Fan With Ductwork
- 2 – **54" SINGLE NIP EMBOSSERS**, Asset #'s 1 & 2, 54" Maximum Width, 44" Maximum Roll Diameter, 25-HP, 16" Diameter Rubber Roll, 9" Diameter Embossing Roll, Single Unwind/Wind Stand
- 1 – **APPLETON 36" SINGLE NIP EMBOSSER**, Asset # 7, 850 Feet/Minute, 36" Maximum Width, 64" Maximum Roll Diameter, 18" Diameter Rubber Roll, 9" Diameter Embossing Roll, Single Unwind/Wind Stand
- 1 – **WALDRON 72" SINGLE NIP EMBOSSER**, 60-HP, 72" Maximum Width, 44" Maximum Roll Diameter, 20" Diameter Rubber Roll, 10" Diameter Embossing Roll, Single Unwind/Wind Stand
- 1 – **APPLETON CHAMPION TANDEM EMBOSSER NO. 20**, Converted Calender Machine, 650 Feet/Minute, 60" Maximum Width, 44" Maximum Roll Diameter, (4) 14" Diameter Rubber Rolls, (2) 16" Diameter Chrome Rolls, (2) 10" Diameter Embossing Rolls, Single Unwind/Wind Stand
- 1 – **APPLETON CHAMPION TANDEM EMBOSSER NO. 12**, Converted Calender Machine, 650 Feet/Minute, 60" Maximum Width, 44" Maximum Roll Diameter, (1) 12" Diameter Embossing Roll, (2) 16" Diameter Rubber Rolls, (2) 18" Diameter Chrome Rolls, Single Unwind/Wind Stand



PACKAGING

- 1 – **LAMB-GRAYS HARBOR CO. MODEL RAPPER NO. 35 ROLL WRAPPING SYSTEM**, S/N 890523 (1990), 60" Diameter x 80" Face Maximum Roll Size, Including:
 - Automated In-Floor Conveyor Infeed System, With 90° Turntable Station, Roll Kickers, Cushioned Roll Stop, Approx. 300' Conveyor
 - Wrapping Station, Infeed Roll Kicker With Cushioned Stop & Feed Ramp, Automated Roll Straightener/Positioner, Automated Wrapper, Side Folder, Side Disc Sealer, Unloading Roll Kicker
 - Automated In-Floor Conveyor Outfeed System, With Roll Kickers, 90-Degree Turntable Station, Approx. 200' Conveyor
 - Automated Roll Elevator Lift, 90° Rotator, & Upender, Outfeed Roller Conveyor
- 1 – **INVOLVO-AG MODEL AFDS AUTOMATED CARTON PALLETIZING LINE**, S/N 871616 (1987), 6-Cartons/Minute, 17.5" x 22" Minimum Carton Size, 28" x 40" Maximum Carton Size, Skid Infeed Conveyor, Involve Empty Skid Stacker, Involve Paper Stack Sorter, Paper Stack Conveyor, Involve Automated Carton Former, Weighing Section, NJM Side Labelers, NJM Model 88-CU-6613E Box Stacker, Skid Outfeed Conveyor
- 1 – **LITHIBAR MATIK MODEL 88-PI-1586 PALLETIZER**, S/N 130
- 1 – **LANTECH MODEL Q300 SEMI-AUTOMATIC PALLET SHRINK WRAP MACHINE**, With Infeed Conveyor
- 1 – **ACME SKID PRESS MODEL E50D6 COMPRESSION BANDING LINE**, S/N 208, 60" x 65", Roller Conveyor, Control Console With Allen Bradley PanelView 900 PLC Control

SCRAP BALING SYSTEMS

- 1 – **HARRIS MODEL HRB-8/NF-BR 2-RAM NON-FERROUS HORIZONTAL HYDRAULIC BALER**, S/N 2149 (1998), Allen Bradley PLC Control System, 60" Metal Belt Infeed Conveyor With In-Floor Load Section, Incline, & Horizontal Discharge, Automatic Collector Hopper System, Auto-Tie System, Bale Size 36" x 30" x Var. – 60"
- 1 – **AMERICAN BALER COMPANY MODEL 3629720R CONTINUOUS HORIZONTAL BALER**, S/N 7803597 (1997), Bale Size 30" x 42" x Var. – 60", Auto-Tie System, 20-HP Hydraulic Unit, Automatic Collector Hopper System, PLC Control System
- 1 – **AMERICAN BALER COMPANY MODEL 10255 HORIZONTAL BALER**, S/N 261-6006, Bale Size 26" x 36" x Var. , Manual Tie, Collector Hopper
- 1 – **MAC MODEL MACTIFLO DUST COLLECTOR**, Pneumatic Pulse-Jet Cleaning, (12) Replaceable Filters
Quantity Of Portable Scrap Material Bins

PLANT UTILITIES • MACHINE SHOP & MAINTENANCE

PLANT UTILITIES

- 1 - RILEY 200,000-LBS./HR COAL STOKER FIRED TRAVELING GRATE STEAM BOILER, S/N 3807, 750 PSI @ 500°F, 15,038 Square Feet Of Heating Area, Economizer & Super Heater, 1325A Fan Blower, (2) Stock Equipment Company Coal Feeders
- 1 - BABCOCK & WILCOX 340,000-LBS./HR COAL FIRED STEAM BOILER, S/N 546-1118, 725 PSI @ 750°F, 20,592 Square Feet Of Heating Area, (4) Coal Pulverizer/Feeders
- 2 - ATLAS COPCO MODEL ZR-5 ROTARY SCREW AIR COMPRESSORS, S/Ns NA, (1989), 500-HP, 2,000-CFM, 100-PSIG, Water Cooled, Bay Pro-Tec 3200S Microprocessor Controls
- 2 - ATLAS COPCO MODEL GA45 ROTARY SCREW AIR COMPRESSORS, S/Ns HOL023268 & HOL023144, 60-HP, Enclosure Package, With 400-Gallon Vertical Receiver Tank
- 1 - WESTERN RESERVE WATER SYSTEMS MODEL 75-GPM REVERSE OSMOSIS WATER TREATMENT SYSTEM, S/N W1010225-002 (2010)
- 1 - INGERSOLL RAND MODEL 4X10DA-6 600-HP PISTON-TYPE BOILER WATER SUPPLY PUMP, S/N 1093028, 830 GPM, 3560 RPM, 2060 Hd.Ft.
- 1 - 500-HP PISTON-TYPE BOILER WATER SUPPLY PUMP
- 1 - INGERSOLL RAND MODEL LLE 150-HP RECIPROCATING AIR COMPRESSOR, S/N A30LL5B-3492, Size 16-1/4 & 10 x 5, 100 PSI, 880 RPM, Water Cooled
- 1 - CHICAGO PNEUMATIC 500-HP HORIZONTAL RECIPROCATING AIR COMPRESSOR, S/N NA, 2,700-CFM, Water Cooled, With Bay Controls ProTech 3200R Microprocessor Reciprocating Compressor Control System
- 1 - INGERSOLL RAND MODEL D-75 REFRIGERATED COMPRESSED AIR DRYER, S/N 71D1486
- 1 - ZEKS MODEL 2500DHB40M0 DESICCANT TYPE COMPRESSED AIR DRYER, S/N 121416-M497 (1997)



MACHINE SHOP & MAINTENANCE

- 1 - GIDDINGS & LEWIS MODEL SERIES 30 TABLE TYPE HORIZONTAL BORING MILL, S/N 4816, 3" Spindle, 36" x 74" Table, 8.3-500 Main RPM, 25-1500 Auxiliary RPM, Outboard Support
- 1 - CINCINNATI BICKFORD 6' ARM x 15" COLUMN RADIAL DRILL, S/N 4E-389, 20-1248 RPM, L-Base, Plain Box Table
- 1 - LEBLOND 32" x 240" ENGINE LATHE, S/N N1779, 6.5-400 RPM, Quick Change Threading, Taper, 2-1/2" Hole Thru Spindle
- 1 - EASTERN 36" x 180" ENGINE LATHE, S/N 7926, 6-260 RPM, Quick Change Threading, Taper, 2-1/2" Hole Thru Spindle
- 1 - BOYE & EMMES 20" x 144" ENGINE LATHE, S/N CU-211, 12.5-436 RPM, Quick Change Threading
- 2 - NEBEL 19" x 100" ENGINE LATHES, S/Ns LN487948 & LN487949, 12-400 RPM, Quick Change Threading, Taper, 1-3/4" Hole Thru Spindle
- 1 - BOYE & EMMES 16" x 56" ENGINE LATHE, S/N LO15010, 15-420 RPM, Quick Change Threading
- 1 - CINCINNATI MODEL NO. 3 UNIVERSAL HORIZONTAL MILLING MACHINE, S/N 2E30013, 15"x62" Table, 18-450 RPM
- 1 - SMITH & MILLS 24" SHAPER
- 1 - GROB 24" VERTICAL BANDSAW
- 1 - KRW 75-TON HYDRAULIC SHOP PRESS
- 1 - MORRISON MODEL K KEYSEATER, S/N K965109 (1996)
- 1 - JOHNSON MODEL J 10" CAPACITY HORIZONTAL BANDSAW, S/N 6279
- 1 - RACINE 24" x 12" CAPACITY HORIZONTAL POWER HACKSAW
- 1 - TRINCO MODEL 48X48/600 ABRASIVE DRY BLAST CABINET, S/N 31548-8
- 1 - SCHENCK MODEL H40B/CAB720 ROLL BALANCER, S/N 8604S (1997), 5,000-Lb. Capacity, 63" Maximum Diameter x 10' Bed, Computer Control Stand

MACHINE SHOP & MAINTENANCE MISCELLANEOUS: Including Drill Presses, Double End Grinders, Arbor Presses, Pipe Threaders, Welders, Plasma Cutters, Belt Sanders, Band Saws, Lathes, Ironworker, Hand Bending Brake, Circle Shear, Hand Tools, Power Tools, Machine Shop Accessories, Maintenance Support Equipment, Etc.

CRANES • HOISTS • FORKLIFTS • ROLLING STOCK • FACTORY & PLANT SUPPORT

CRANES / HOISTS, ROLL HANDLING ATTACHMENTS

- 1 – **SORTMAN CRANE & HOIST 35-TON TOP RIDING DOUBLE GIRDER BRIDGE CRANE**, S/N 281040 (2009), 52' Span, Top Riding R&M SpaceMaster RX Hoist, Estimated Lifting Height 80', Radio & Hand Pendant Controls
 - 1 – **LANDEL 20-TON TOP RIDING DOUBLE GIRDER BRIDGE CRANE**, 60' Span, Top Riding Hoists, Demag 20-Ton Main Hoist, Auxiliary Hoist, 6-Way Power Pendant Control
 - 1 – **WHITING 10-TON TOP RIDING DOUBLE GIRDER BRIDGE CRANE**, 60' Span, Top Riding Hoist, 6-Way Power Pendant Control
 - 1 – **EGM 10-TON TOP RIDING DOUBLE GIRDER BRIDGE CRANE**, 26' Span, Top Riding Hoist, 6-Way Power Pendant Control
 - 2 – **SORTMAN CRANE & HOIST 6-TON BOTTOM RIDING SINGLE GIRDER BRIDGE CRANES**, 26' Span, Demag 6-Ton Bottom Riding Hoists, Radio & 6-Way Power Pendant Controls
 - 2 – **6-TON MONORAIL CONNECTOR TRACKS**, 100' Length, With Hot Track
 - 2 – **SORTMAN CRANE & HOIST 6-TON BOTTOM RIDING SINGLE GIRDER BRIDGE CRANES**, 18' Span, Demag 6-Ton Bottom Riding Hoists, 6-Way Power Pendant Controls
 - 1 – **SHEPHARD NILES 5-TON TOP RIDING DOUBLE GIRDER BRIDGE CRANE**, S/N 66654, 45' Span, Top Riding Hoist, 6-Way Power Pendant Control
 - 1 – **SHEPHARD NILES 5-TON CITY TOP RIDING DOUBLE GIRDER BRIDGE CRANE**, S/N 67047, 45' Span, Top Riding Hoist, 6-Way Power Pendant Control
 - 2 – **MPH CRANE 3-TON BOTTOM RIDING SINGLE GIRDER BRIDGE CRANES**, S/Ns 93C611 & NA, 35' Span, P&H Bottom Riding Hoist, 6-Way Power Pendant Control
 - 1 – **P & H 10-TON BOTTOM RIDING ELECTRIC CABLE HOIST**, Power Trolley, 4-Way Pendant Control, 75' Stationary I-Beam Monorail
 - 6 – **DEMAG 6-TON BOTTOM RIDING ELECTRIC CABLE HOISTS**, Power Trolley, 4-Way Power Pendant Control, Stationary I-Beam Monorail
 - 5 – **LO-HED 3-TON BOTTOM RIDING ELECTRIC CABLE HOISTS**, Power Trolley, 4-Way Power Pendant Control
 - 1 – **ACCO MODEL MANSAVER 6-TON MOTORIZED SPREADER TYPE ROLL LIFTING CLAMP ATTACHMENT**
 - OVER 12 ACCO MODEL MANSAVER 6-TON SPREADER BAR TYPE ROLL LIFTING ATTACHMENTS**, 10'-12' Length, J-Hook Ends
- QUANTITY OF ELECTRIC & MANUAL HOISTS**, to 6-Ton Capacity, Spreader Bars, Etc.



FORKLIFTS & ROLLING STOCK

- 1 – **BRODERSON MODEL IC-80-2D 8-1/2-TON HYDRAULIC CARRY DECK CRANE**, S/N 190179 (1993), 24' 3-Section Boom, 10' Swing-Away Jib, 34' Maximum Load Radius, 40'10" Maximum Height With Jib, LPG, 2-Wheel Drive, 4-Wheel Steer, Pneumatic Tires
 - 1 – **GENIE MODEL GS-2032 ELECTRIC SCISSORS LIFT AERIAL WORK PLATFORM**, S/N GS3207-84859
 - 1 – **GROVE MODEL SM3158E ELECTRIC SCISSORS LIFT AERIAL WORK PLATFORM**, S/N 18875, 25' Maximum Platform Height, 800-Lb. Capacity, Pneumatic Tires
- OVER 6 ROLL CLAMP FORKLIFTS**, Hyster, LPG, To 8,000-Lb. Capacity
- OVER 25 FORKLIFTS**, Hyster, Clark, Yale, LPG, To 10,000-LB. Capacity
- OVER 20 WALKIE-TYPE ELECTRIC FORKLIFTS, STACKERS, STRADDLE LEG, PLATFORM TRUCKS**, Hyster, Yale, Clark
- OVER 12 TUGGER TRACTORS**, LPG & Electric, Sit-Down & Stand-Up Rider, Clark, Harlan, AG Mercury, Hyster, Motrec
- OVER 25 PERSONNEL & MATERIAL HANDLING VEHICLES**, Electric & LPG, Passenger, Flatbed, Maintenance, etc.
- OVER 10 INTER-PLANT TRANSPORT WAGONS**, Tandem Set-Up, Solid Tires, 4'x11' Platform Size



FACTORY, PLANT & OFFICE SUPPORT EQUIPMENT

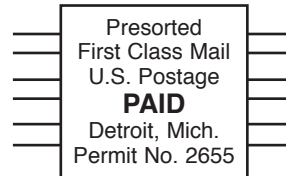
- OVER 325 STANLEY VIDMAR MULTI-DRAWER STORAGE CABINETS**
- QUANTITY OF Mill Spares**: Motors, Gearboxes, Pumps, etc.; Service & Repair Parts Inventory
- Large Quantity of General Plant & Factory Support Equipment
- Plant Support Offices: IT Equipment, Furniture, Etc.

Hilco Industrial, LLC

Auctioneers • Liquidators • Appraisers

Headquarters

31555 W. Fourteen Mile Road, Suite 207
Farmington Hills, MI 48334
Ph: 877-37-HILCO (44526)
Fx: 248.254.9995
www.hilcoind.com



Forwarding Service Requested



WEBCAST / ONSITE AUCTION

Specific assets available in the continuing operations of



Unprecedented Offering of a Complete Paper Manufacturing Facility Along With Power Generation Equipment



Wednesday & Thursday, April 18th – 19th
Beginning at 10am Local Time Each Day
Hamilton, OHIO

Terms of Sale

A 15% buyer's premium will be charged on all onsite sales. An 18% buyer's premium will be charged on all Bidspotter sales. Everything will be sold to the highest bidder for cash, in accordance with the Auctioneer's customary "Terms of Sale", copies of which will be posted on the premises of the sale and subject to additional terms announced the day of sale. All items will be sold "as is, where-is" without any warranties, expressed or implied. Although obtained from sources deemed reliable, the Auctioneer makes no warranty or guarantee to the accuracy of the information herein contained. Bidders are encouraged to thoroughly inspect the items on which they intend to bid prior to sale. Absolutely no items will be removed until the day after the conclusion of the sale and payment is made in full. Subject to additions, deletions and prior sale.

Payment: ALL PURCHASES MUST BE PAID IN FULL ON THE DAY OF THE AUCTION. If you intend to pay by wire transfer, we will accept payment the day after the sale ONLY IF a deposit of 25% of total purchases is made on the day of the sale. Contact our office for wire transfer instructions. Only cash, wire transfer or certified check, payable to Hilco Industrial, LLC will be accepted. Company checks payable to Hilco Industrial, LLC will be accepted only if accompanied by a bank letter of guarantee, (see sample letter below). All sales are subject to sales tax. Purchasers claiming exemptions from taxes must provide proof satisfactory to the Auctioneer of their entitlement to claim such exemptions.

Sample Bank Letter

(Bank Name) unconditionally guarantees payment to Hilco Industrial, LLC from (Company Name). This guarantee will be valid for purchases made at the Auction of Smart Papers on Wednesday and Thursday, April 18-19, 2012.

Follow Us on:

